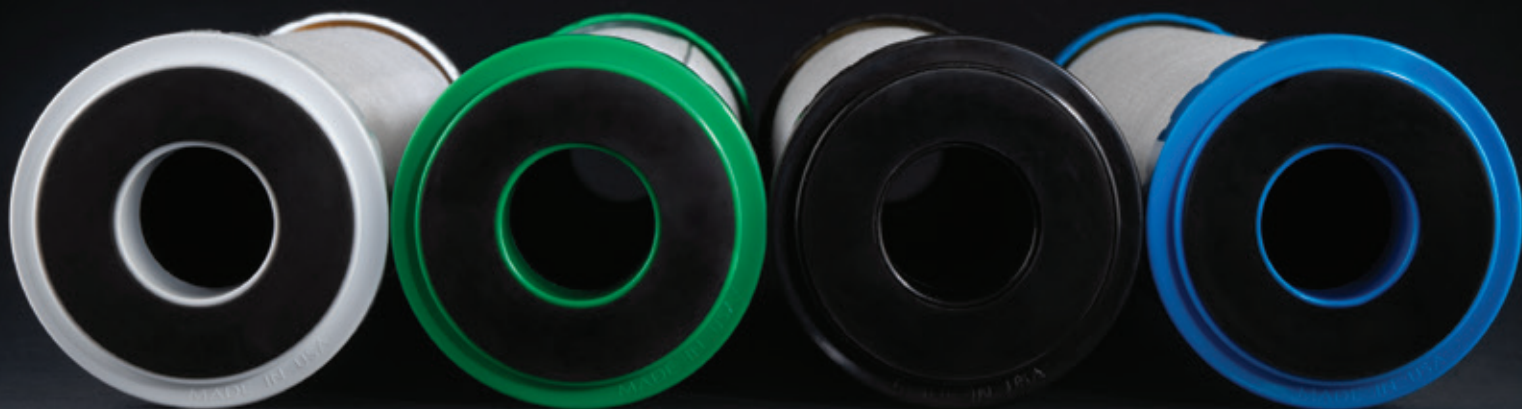


CBAF

Premium carbon block cartridges,
crafted from coconut acid-washed and catalytic carbon
for superior performance.



CUT THE CLUTTER



Efficient removal of:

- **chlorine, taste and odour**
- **heavy metals**
- **volatile organic compounds**
- **protozoan cysts**
- **fine sediment**



CB AF CTO

CARBON BLOCK
crafted from coconut
acid-washed carbon.

***chlorine-
taste&odour
+ fine
sediment***

THE WHITE ONE

Fine sediment filtration and reduction of:
chlorine, taste, odour
Average life-span: 3-6 months.
Maintenance: none.

SPECIFICATIONS

Selected raw materials, suitable for drinking water.
Filter medium: sintered block made from
coconut shell activated carbon powder.
End caps and outer protection sheet: polypropylene.
Flat seals: Texprene.

Filtration: 10 micron

WORKING CONDITIONS

MAX WORKING TEMPERATURE: 45°C (113°F)
MIN WORKING TEMPERATURE: 4°C (39,2°F)

MODELS

CB AF CTO 10
(5" and 7" available)



CB AF CTO 20



CB AF CTO 10 BIG



CB AF CTO 20 BIG



CB AF **CYST**

CARBON BLOCK
crafted from coconut
acid-washed carbon.

***protozoan
cysts
+ fine
sediment***

**1
µm**

THE **BLUE** ONE

Fine sediment filtration and reduction of:
**chlorine, taste, odour,
volatile organic compounds
and protozoan (Giardia,
Cryptosporidium) cysts.**
Average life-span: 3-6 months.
Maintenance: none.

SPECIFICATIONS

Selected raw materials, suitable for drinking water.
Filter medium: sintered block made from
coconut shell activated carbon powder.
End caps and outer protection sheet: polypropylene.
Flat seals: Texprene.

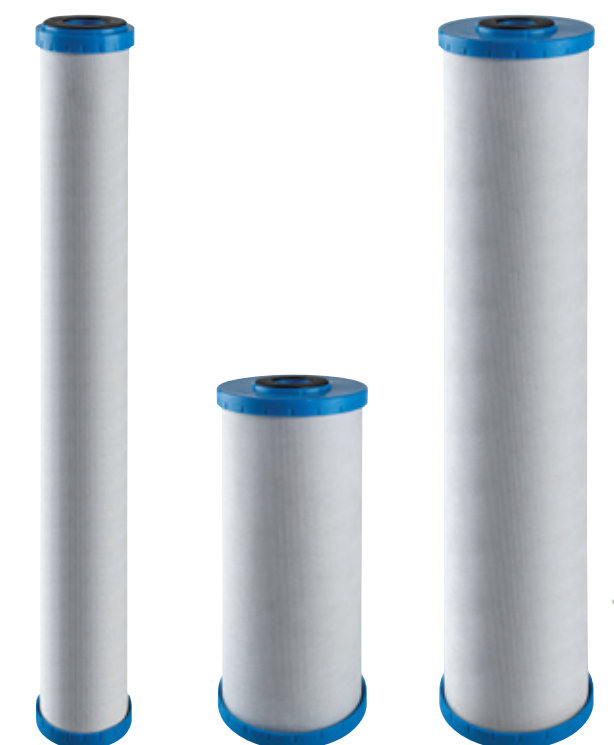
Filtration: 1 micron

WORKING CONDITIONS

MAX WORKING TEMPERATURE: 45°C (113°F)
MIN WORKING TEMPERATURE: 4°C (39,2°F)

MODELS

CB AF CYST 10
(5" and 7" available)



CB AF CYST 20

CB AF CYST 10 BIG

CB AF CYST 20 BIG



CB AF **Pb**

CARBON BLOCK
crafted from coconut
acid-washed and catalytic
carbon with the addition
of lead and other
heavy metals scavengers.

***heavy
metals
+ fine
sediment***

**1
µm**

THE **B L A C K** ONE

Fine sediment filtration and reduction of:
heavy metals

Average life-span: 3-6 months.

Maintenance: none.

SPECIFICATIONS

Selected raw materials, suitable for drinking water.

Filter medium: sintered block made from
coconut shell activated carbon powder.

End caps and outer protection sheet: polypropylene.

Flat seals: Texprene.

Filtration: 1 micron

WORKING CONDITIONS

MAX WORKING TEMPERATURE: 45°C (113°F)

MIN WORKING TEMPERATURE: 4°C (39,2°F)

MODELS

CB AF Pb 10
(5" and 7" available)



CB AF Pb 20



CB AF Pb 10 BIG



CB AF Pb 20 BIG




CB AF **VOC**

CARBON BLOCK
crafted from coconut
acid-washed and
catalytic carbon.

***volatile
organic
compounds
+ fine
sediment***

THE **GREEN** ONE

**5
µm**



Fine sediment filtration and reduction of:
volatile organic compounds
Average life-span: 3-6 months.
Maintenance: none.

SPECIFICATIONS

Selected raw materials, suitable for drinking water.
Filter medium: sintered block made from
coconut shell activated carbon powder.
End caps and outer protection sheet: polypropylene.
Flat seals: Texprene.

Filtration: 5 micron

WORKING CONDITIONS

MAX WORKING TEMPERATURE: 45°C (113°F)
MIN WORKING TEMPERATURE: 4°C (39,2°F)

MODELS

CB AF VOC 10
(5" and 7" available)



CB AF VOC 20



CB AF VOC 10 BIG



CB AF VOC 20 BIG

CB AF

CUT THE CLUTTER



Download our official product maintenance app **NOW**

MYATLAS
watercaremadeeasy



IT'S MADE IN ITALY



www.atlasfiltri.com

CERTIFICATIONS:



CB AF series is tested and certified by NSF International against NSF/ANSI 42 for material safety requirement only.

CB AF CTO 10 models meet Aesthetic Chlorine reduction criteria as per NSF/ANSI 42 test protocol based on manufacturer's internal testing. | **CB AF VOC 10** models meet VOC reduction criteria as per NSF/ANSI 53 test protocol and Particulate Class II reduction criteria as per NSF/ANSI 42 test protocol based on manufacturer's internal testing. | **CB AF CYST 10** models meet Cyst reduction criteria as per NSF/ANSI 53 test protocol and Particulate Class I reduction criteria as per NSF/ANSI 42 test protocol based on manufacturer's internal testing. | **CB AF Pb 10** models meet Lead reduction criteria as per NSF/ANSI 53 test protocol based on manufacturer's internal testing.



CB AF cartridges are tested and certified under the most stringent procedures worldwide, in compliance with DM 25 (Italy) and with the sanitary certification EAC/Ghostreghistrizia (Russia).

COMPONENT